

NIRO-PPOOL

STAINLESS STEEL POOLS MADE IN AUSTRIA

Stainless steel pools are in line with the current trend, as breathtaking aesthetics pair with class-leading technology and unmatched economical efficiency.

The utilization of high-grade raw materials such as stainless steel requires most accurate and workmanlike processing qualities in order to guarantee a flawless outcome. With more than 15 years of experience in the construction of swimming pools, the Austrian-based company Niro-Pool takes great pride in carrying the well-known trademark MADE IN AUSTRIA. Offering the highest possible range of adaptability, stainless steel pools by Niro-Pool are individually made-to-measure to fit any and all sizes and installation sites.

While the company's main business focus is primarily directed towards German-speaking countries, Niro-pools have been built all across Europe. Ranging from the individual planning of your custom-made pool and ready-for-use in-house productions in Ampflwang to the complete assembly performed by well-versed experts, Niro-Pool offers a plethora of services tailored to your personal needs.

Alongside the reconstruction of stainless steel pools, Niro-Pool also takes sustainable care of the support of any and all technical facilities complementing your individual pool, including water treatment. Consequently, Niro-Pool is the one-stop supplier for pools and pool equipment alike. Last but not least, a swift and efficient customer service rounds off the range of services.

As Individual As Luxury Can Be.



CONTENT

The Pool System	Page 5
Skimmer Pools	Page 6
Spillway Pools	Page 7
Pool Hygiene & Technology	Page 19
Hotel Swimming Facilities	Page 22
Public Swimming Facilities & Therapy Centers	Page 23
Stainless Steel Whirlpools	Page 27
Stainless Steel Equipment	Page 28
Pool Accessories & Technology	Page 29
Your Individual Pool	Page 30
First-Class Assembling Quality	Page 32



A pool system's individual diversity is completed by additional stainless steel design and wellness elements.

Learn more on page 28.

THE POOL SYSTEM MADE BY NIRO-POOL

Stainless steel pools produced by Niro-Pool commonly feature a favorable free-standing and self-supporting design approach, enabling instant access to the tank body at any time while making concrete walls obsolete.

- Maximum longevity and durability
- Absolute water tightness
- Optimum hygiene conditions
- Short installation period and comparatively little construction work
- Individual planning options
- Cost-effective operation
- Resistant to frost and ultraviolet radiation
- Development of overall solution & complementary equipment
- Competent service

Relevant to the proper technological implementation is not only the design and integration of a pool into its adjacent environment; a major technical aspect also stems from the treatment of bathing water. In this respect, Niro-Pool provides individual solutions for the customer including an on-demand installation of fully automated systems.

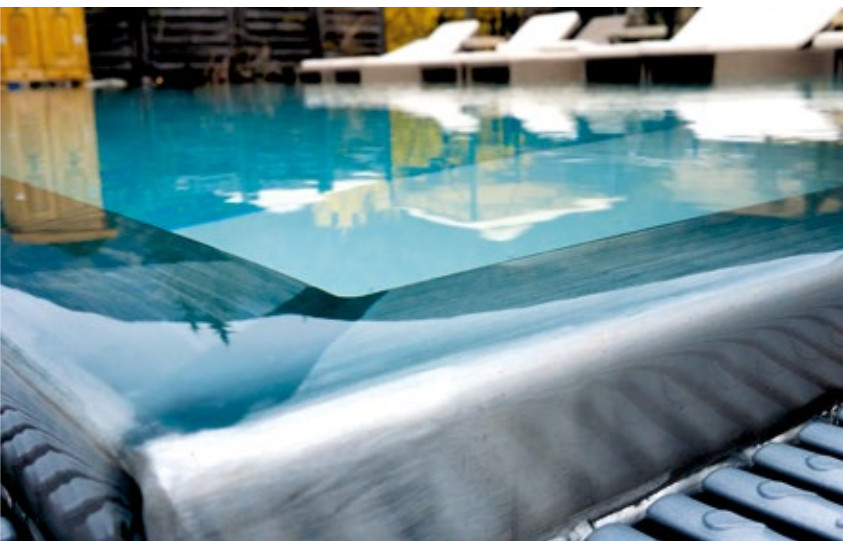


SKIMMER POOLS

Skimmer pools are characterized by the process of polluted pool water being drawn by the circulation pump through openings at the level of the surface of the water in order to be cleaned. The skimmer unit (surface cleaner) basically consists of an intake port including an adjustable weir as well as a fine-meshed sieve basket filter that captures major pollutants (leaves etc.) but allows the cleaned water to pass through to the spray nozzles that lead it back into the pool.

By default, the skimmer also features an easy-to-reach and use connection option for the hose of a pool floor cleaning unit.

The required number of skimmers depends on the expanse of water and the high volume flow rate of the pool filter system.



SPILLWAY POOLS INFINITYPOOLS

A spillway pool is unique in the way in which it dams up the water level through the overflow edge of the pool's gutter in order to attain a water overflow that is as continuous and smooth as possible. This process is overseen periodically by Niro-Pool via laser measurement systems, which reliably measure the tolerances of the overflow edge.

It is defined by law that public swimming pools have to have a level of water hydraulics sufficient to guarantee a swift and steady exchange of water and optimal cleaning conditions. With Niro-Pool, also privately-owned swimming pools can be equipped with a similar system by mounting a duct for the inflow of water at the bottom of the pool.

Your advantages at a glance:

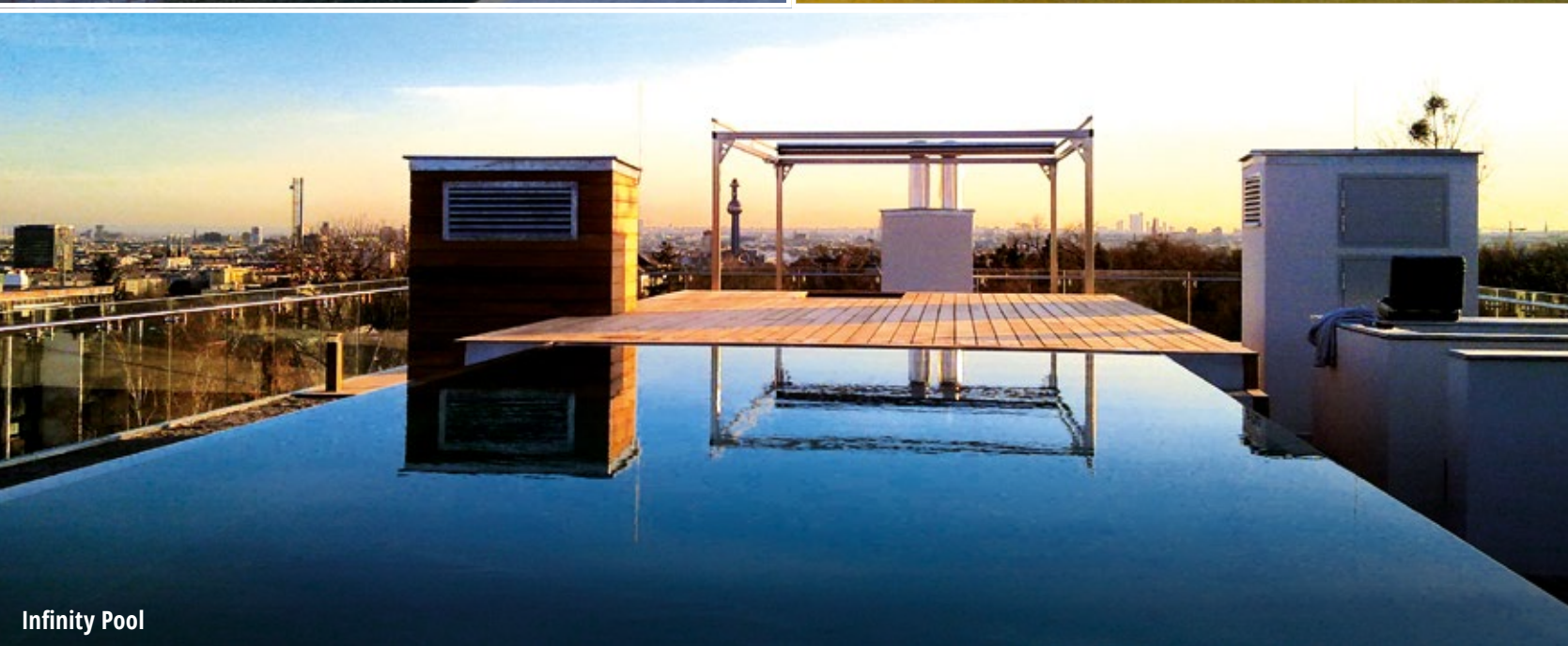
- Hygiene and comfort at the highest level
- Seamlessly fitting in with the surrounding environment, the pool unifies all adjacent areas to form a unity of comfort and relaxation
- Efficient water circulation to cater for crystal clear bathing water quality and a maximum of pureness
- Minimized need for cleaning owing to the pollution-free bowl of the pool
- Calm water surface even when swimming
- Enjoy an unobstructed view over all areas surrounding the pool



Whirlpool



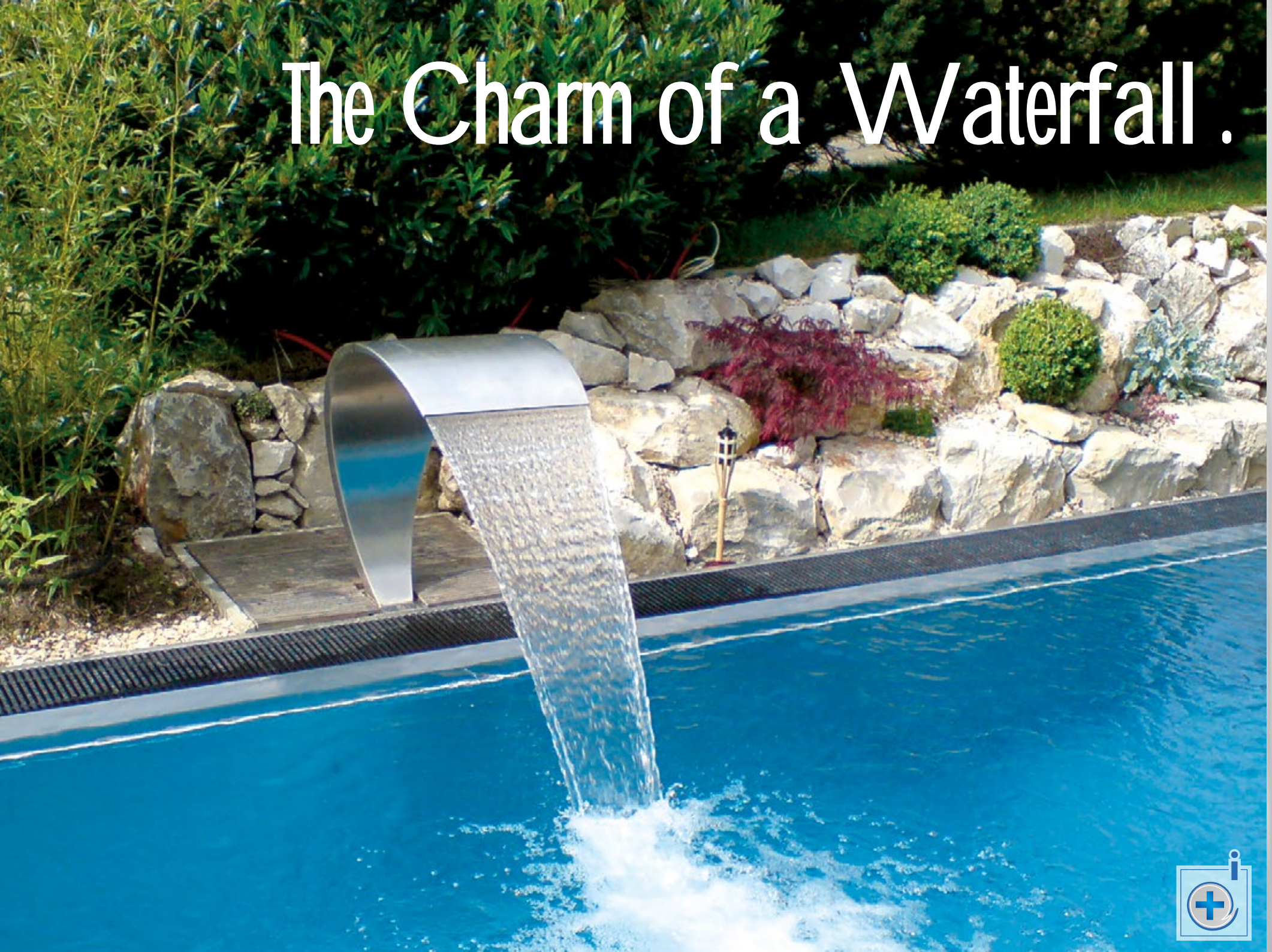
Invisible overflow edge: When less is more!



Infinity Pool

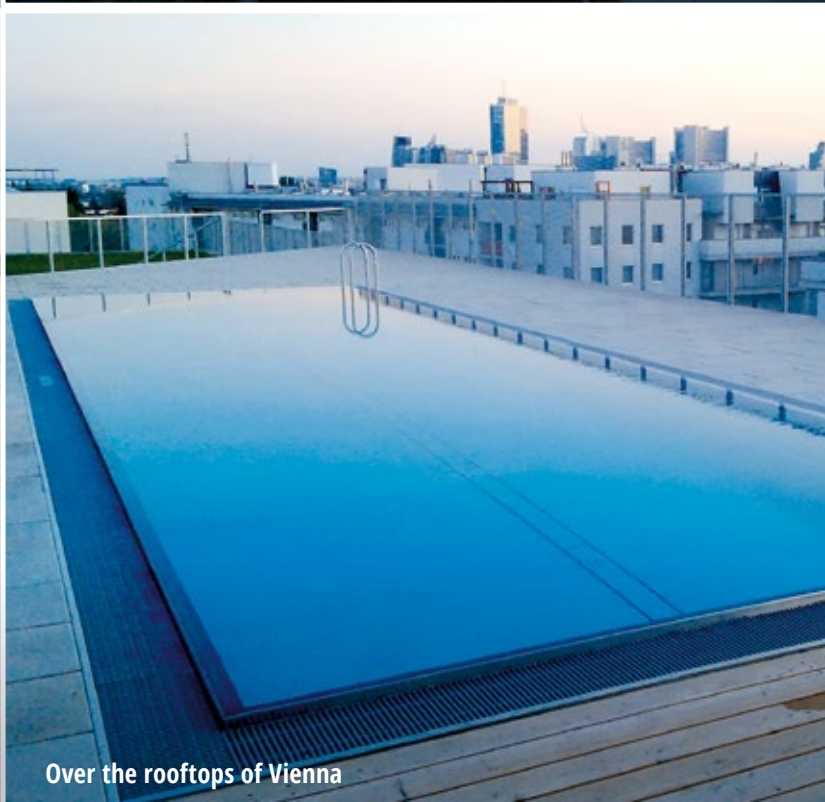


The Charm of a Waterfall .





View of the RAX



Over the rooftops of Vienna





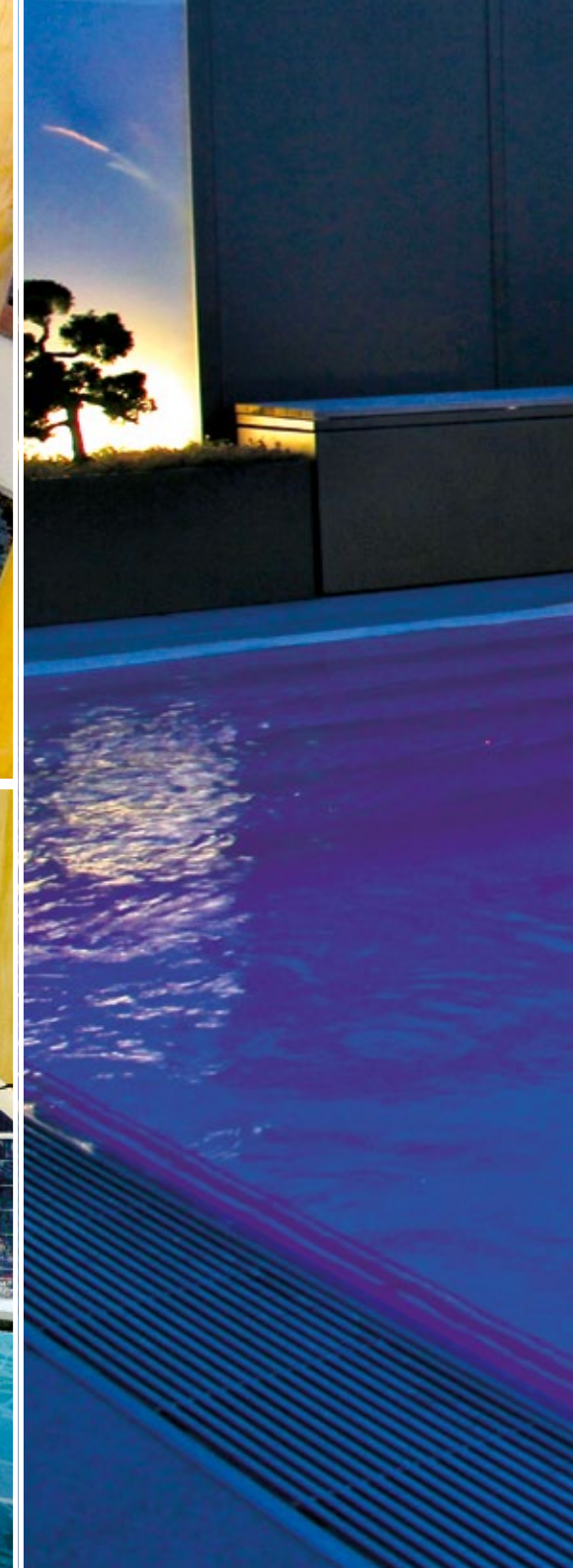
Inspired by Nature.



Kneipp water-treading basin



Hotel Central in Längenfeld



A Pool with Style .

Colorful experiences in the garden



Stubai



Pool entry the classy way



Giving Water Space.

Infinity at its best





forsthofalm

natur
freizeit



1st Edition.

1,000qm rooftop
SPAnorama featuring a 360 degree vista

Apart from the construction of traditional, straight-lined swimming pools, Niro-Pool's core competences also lie in the production of swimming facilities that are characterized by their unique polygonal or round shapes.

This in turn grants architects and planners with almost infinite solution diversity particularly important in the upscale hotel industry.

Last but not least, exciting design elements like piped whirl-loungers or customized splash showers etc. round off the large variety.



POOL HYGIENE & TECHNOLOGY

Whosoever is lucky enough to possess a pool on one's own likely wants to enjoy carefree pleasure and relaxation too. By ensuring the fulfillment of technical and hygienical prerequisites it is easy to keep maintenance at a minimum.

In this regard, the use of water technology systems featured by Niro-Pool is highly advantageous with respect to ease of implementation, timesaving configuration and perfect reliability.

Simply choose from the subsequently listed gadgets or services in order to minimize the requirement for maintenance, cleaning and repair:

- Pool robot: takes care of the bulk of the maintenance jobs
- Maintenance and care service: while checking the condition of all facilities linked to the pool ecosystem (till up to four times during the bathing season), Niro Pool's skilled technicians also perform maintenance tasks if necessary.
- Remote supervision of the entire water treatment system

Smart pools for smart customers

Utmost carefreeness is attained by choosing in favor of a fully-automated water treatment system by Niro-Pool, which autonomously takes care of the filling of the pool as well as the topping-up of fresh water. This also compensates for the continuous loss of water.



Cross-generational bathing experience



Experience the pool directly from the living room

Inspiration Water.





HOTEL SWIMMING FACILITIES

The trend of wellness and wellbeing is still on the advance throughout the global hotel industry, and guests more than ever demand well-thought-out and attractive wellness and spa solutions, including pools and pool equipment.

Successfully proven to be effective even in the most challenging situations, Niro-Pool's stainless steel swimming pools are developed specifically to withstand maximum strain and comply with the highest demands on quality. The first choice in wellness solutions are stainless steel pools by Niro Pool.

Your advantages:

- First-class quality of manufacturing
- Individual planning options
- Specialized in reconstruction
- 100% adherence to schedules
- Automated water treatment

No matter if indoor or outdoor, Niro-Pool transforms your personal dreams into reality. Owing to the many years of on-the-job experience, Niro-Pool's employees are very familiar with the applicable legal hygiene regulations, guaranteeing absolute adherence to norms and rules even in case of special-purpose solutions.

TOP TIP: Remote supervision of your water treatment plant



PUBLIC SWIMMING FACILITIES & THERAPY CENTERS

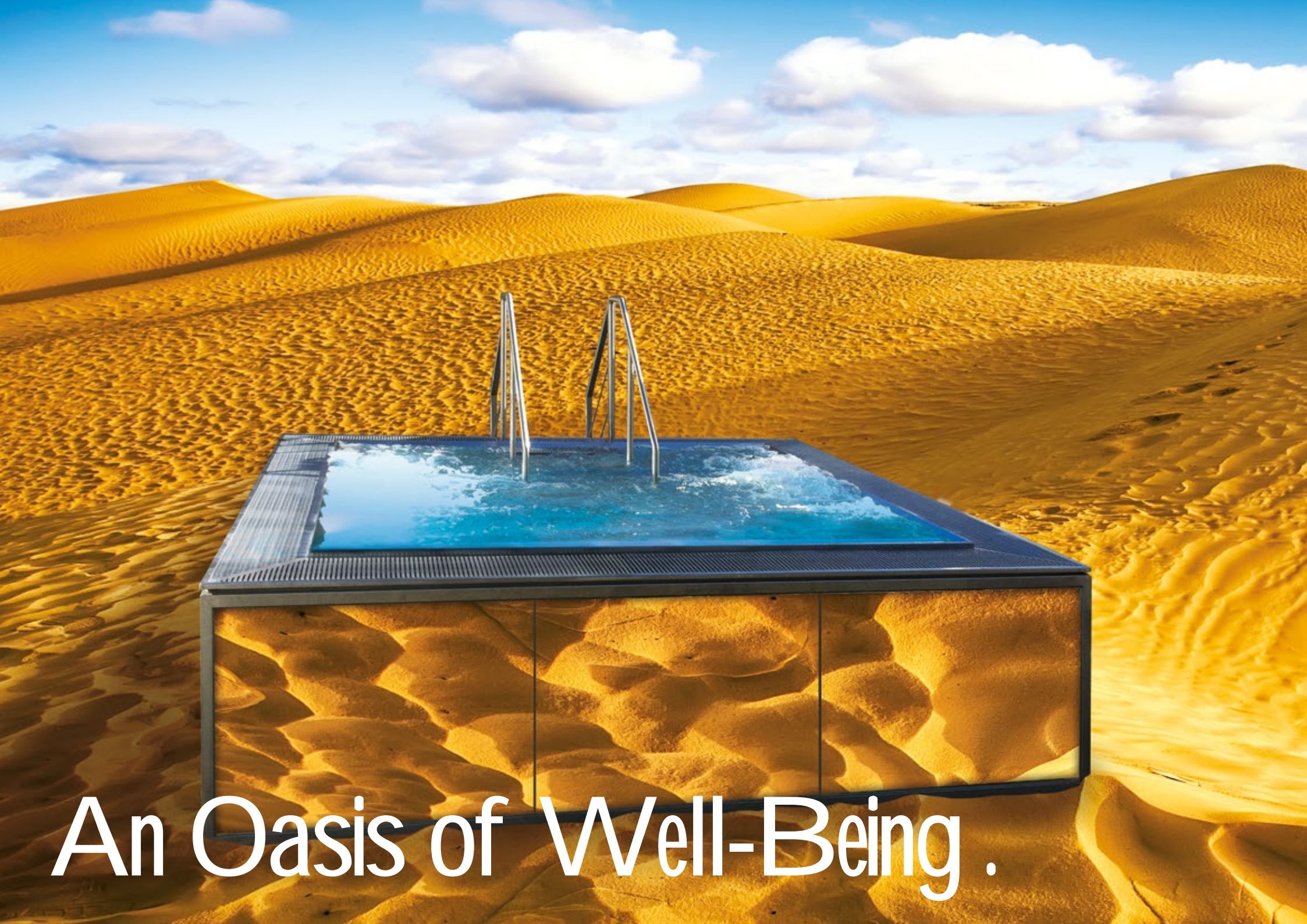
When it comes to the planning and construction of public pool facilities, Niro-Pool's expertise in this field is clearly advantageous with respect to the proficiency and ability of its employees to excel even in non-standard and complex scenarios. Moreover, sound knowledge of the legal hygiene regulations is mandatory. For people with special needs, standard solutions frequently are not enough. In this case, Niro-Pool offers custom-made swimming pools that are being developed in mutual collaboration with renowned therapists and health experts, guaranteeing the highest level of safety and comfort for your guests. Experience has shown that surfaces with non-slip coating, special safety handrails and wide opening pool entries are commonly the most crucial elements in this regard.



The classic Niro-pool

A Puristic Concept.





An Oasis of Well-Being .



STAINLESS STEEL WHIRLPOOLS

Gracious and elegant in style and appearance, stainless steel whirlpools are the centre of luxury and relaxation in your personal spa- and wellness area. Due to its inherent characteristics, stainless steel offers plenty of advantages in the construction of swimming pools compared to other materials, amongst others:

- Superior durability and longevity of the material
- Highly customizable form and individual configuration
- Completely insensible to temperature fluctuations, especially with regard to outdoor facilities
- Smooth surface without joints
- Ease of maintenance, care and cleaning

Among all forms available, round shapes are particularly appealing owing to the development of specific production technologies by Niro-Pool. Configuration-wise, air-bubble seats, multi-color LED lighting etc. perfectly complement your pool experience.

Furthermore, Niro-Pool also manufactures walking pools, fording basins and sauna plunge pools of stainless steel.

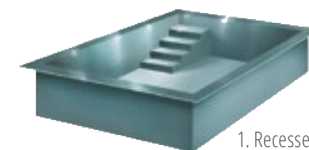


A pool system's individual diversity is completed by additional stainless steel design and wellness elements.

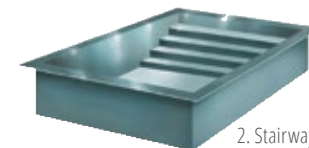
STAINLESS STEEL EQUIPMENT

Niro-Pool offers a wide selection of options to customize your individual bathing experience, ranging from well-thought-out and practical features to refreshing and appealing attractions made of stainless steel. Clever aesthetics that complement your pool, making it look like all-of-a-piece.

- Whirl bank, sun ledge, air couch
- Relaxation step
- Stainless steel splash shower
- Water slide
- Fountain
- Hand rail
- Basin-bounding arch, handles
- Rubber bases
- Massage jets
- Counter current system
- Stainless steel grid mesh



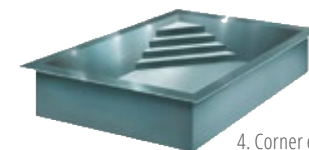
1. Recessed, straight inward entry



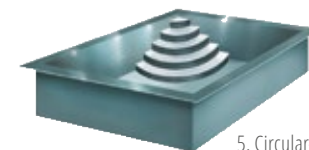
2. Stairway encompassing the whole width of the pool



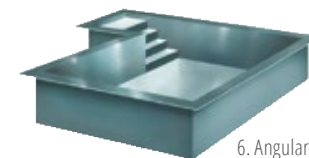
3. Angular-shaped Roman steps (located in the middle of the pool)



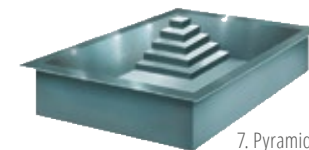
4. Corner entry



5. Circular-shaped corner entry



6. Angular-shaped Roman steps (located at the side of the pool)



7. Pyramid-shaped corner entry



POOL ACCESSORIES & TECHNOLOGY

- Flushly-fitted stainless steel LED spotlights and multi-colored genuine glass
- Underground roller-shutter
- Automated pool bottom cleaner

Water conditioning and technology:

- Pool heat exchanger
- Automated back-washing system
- Water treatment plant
- UV disinfection system
- Fully automated control panels
- Control remote indicator
- Flocculation system

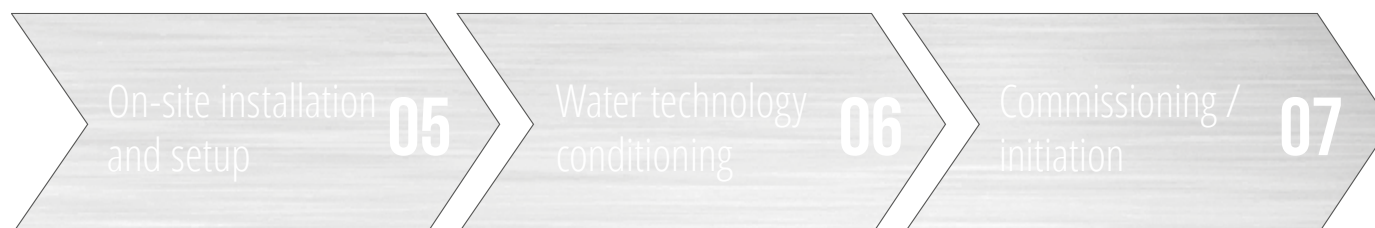
YOUR INDIVIDUAL POOL



An International Welding Engineer is in charge of the individual planning for each and every pool before the latter is finally assembled on site in Ampflwang. Benefitting from the company's in-house production technology, even complex installation points or special-purpose solutions are feasible without difficulty. By default, pools by Niro-Pool are pre-fabricated on-site and then mounted in their place of installation in approximately one week. No matter if transport, pre-fabrication or final assembly, each step is thoroughly planned and coordinated by

specialists supervising the entire process. The right timing further plays an essential role especially with respect to reconstructions and renovations as in that it needs to be as flexible and meticulous as possible. Thanks to the many years of experience in the construction of stainless steel pools, reliable contractual partners are at hand all time carrying out paving work, garden planning, wooden terrace assemblies or other services complementing your pool.





READY WITHIN ABOUT 8 WEEKS*

Save precious time by choosing Niro-Pool's **finished pool concept**.

* depending on weather conditions and degree of capacity utilization

TOP-NOTCH PRODUCTION QUALITY

The pool construction takes place at the company-owned, 1,000qm large production area in Ampflwang/Austria, utilizing a modern train of machinery including inter alia a 6 meter hydraulic guillotine shear, a 6 meter mechanical press brake and a punch/nibbling machine. Each pool is assembled by a skilled team of (about ten) welding engineers and mechanical engineering technicians proficient in the handling of stainless steel materials. To ensure flawless production outcome, an experienced International Welding Engineer is iteratively taking care of quality control.

In the metal processing industry, **MADE IN AUSTRIA** is a seal of quality that still guarantees high value. Following on from the latter, stainless steel Niro-pools offer the finest build quality money can buy.

QUALITY WITHOUT EXPIRY

By deciding in favor of a swimming pool made of stainless steel, you chose the best material with the longest life span. By deciding in favor of Niro-Pool, you chose the most competent partner offering exclusive and made-to-measure swimming pools of stainless steel.





I nfinity .

In stainless steel

NIRO-POL

NIRO-POL GmbH
A-4843 Ampflwang, Ort 55
Tel.: +43 7675 / 3 93 07 Fax: DW 50
office@niro-pool.at
www.niro-pool.com

